



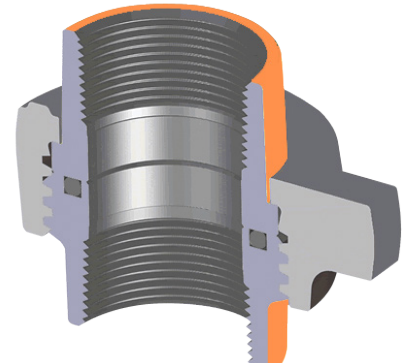
# HAMMER UNIONS - FIGURE 300

C&C's Figure 300 is a Flat-Face type union that has a BUNA-N o-ring seal on the female sub. Recommended for use where straight breakout of pipe segments is required. Suitable for water, oil, or gas service at pressures up to 12,500 PSI NSCWP. Colors vary per pressure rating.

\* Interchangeable with other major manufacturers (see warnings on last page).

## Specifications

- Sizes: 0.5" - 2"
- Pressure Rating: 2,000, 2,500, and 12,500 psi NSCWP
- End Connections: Threaded
- BUNA-N o-ring on female sub (-20°F to 250°F)
- Color Code:
  - 2,000 psi: Yellow Subs / Black Nut
  - 2,500 psi: Gray Subs / Green Nut
  - 12,500 psi: Zinc-plated Subs / Zinc-plated Nut



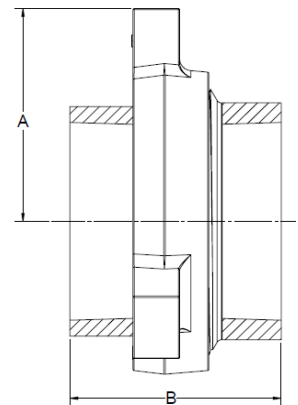
Standard Service					
NSCWP	Test	NSCWP	Test	NSCWP	Test
2,000 psi	3,000 psi	2,500 psi	3,750 psi	12,500 psi	18,750 psi

\*All working pressures are Non-Shock Cold Working Pressure Ratings (NSCWP) at ambient temperatures (-20°F to 100°F)







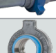









## Threaded End Connections

Nominal Pipe Size	0.5"	0.75"	1"	1"	2"
<b>Pressure Rating</b>	12,500 psi	12,500 psi	2,500 psi	12,500 psi	2,000 psi
<b>Part #</b>	UY30050G100	UY30075G100	UY30100C100	UY30100G100	U030200
<b>Material (Sub)</b>	SAE 4130	SAE 4130	A105	SAE 4130	A105*
<b>Material (Nut)</b>	SAE 4140	SAE 4140	A105	SAE 4140	A105
<b>Clearance Radius (A)</b>	1.80"	1.80"	2.33"	2.52"	2.91"
<b>End to End (B)</b>	2.96"	3.08"	3.20"	3.53"	3.76"
<b>Approx. Weight (lbs)</b>	2.05	2.09	2.79	4.36	6.50
<b>Box Quantity</b>	40	40	32	16	16

\*316SS subs also available



## Full Hammer Union Offering

FIGURE #	COLOR CODING	PRESSURE RATING (psi)		NOMINAL PIPE SIZES													
		Standard Service		0.5"	0.75"	1"	1.25"	1.5"	2"	2.5"	3"	4"	5"	6"	8"	10"	12"
		NSCWP	Test														
100		1,000	1,500						☺	☺	☺	☺	☺	☺	☺		
110		2,500 4,000	3,750 6,000						☺								
200		2,000	3,000			☺	☺	☺	☺	☺	☺	☺		☺	☺	☺	
201		3,000	4,000						☺	☺							
206		2,000	3,000			☺	☺	☺	☺	☺	☺			☺	☺	☺	
207		2,000	3,000								☺	☺		☺			
26H		400	800									☺					
211		2,000	3,000						☺		☺						
300		2,000 2,500 12,500	3,000 3,750 18,750	☺	☺	☺			☺								
301		3,000	4,500						☺								
400		4,000	6,000						☺		☺	☺					☺
602		6,000	9,000			☺		☺	☺	☺	☺	☺					
607 (CGC)		6,000	9,000					☺	☺								
1002		10,000	15,000			☺		☺	☺		☺	☺	☺	☺			
1003		7,500 10,000	11,250 15,000								☺	☺	☺				
1502		15,000	22,500			☺		☺	☺	☺	☺	☺	☺				

 **PRODUCT WARNINGS** 

***Failure to follow these warnings could result in failure and possible personal injury, death, or property damage:***

- C&C products should be used only by qualified, trained individuals experienced in the safe and proper handling of hammer unions and other couplings. Users must follow all applicable specifications and industry best practices for the safe installation and use of C&C products.
- Never exceed the recommended pressure rating or mix components with different pressure ratings, as mismatched components can lead to failure under pressure, resulting in death, personal injury, or property damage.
- Never strike, tighten, or loosen pressurized components or connections.
- Never exceed the non-shock cold rated pressure (NSCWP) of the product. Complete and proper assembly of all components and connections is essential in order to attain the rated NSCWP.
- Never use any worn, eroded, or corroded components or connections. If any component of the union or connection is worn, eroded, or corroded, replace immediately.
- Never strike hammer unions that have deformed or flattened lugs.
- Never use C&C products in suspension applications.
- Never expose standard service components or couplings to sour gas fluids. Do not interchange sour gas components or couplings with standard service components or couplings.
- Always use extra care when working with carbon steel products in temperatures below 32°F/0°C. Freezing temperatures lower the impact strength of carbon steel.
- Always take all appropriate safety precautions and wear all appropriate protective equipment when assembling, disassembling, installing, or removing any C&C product.
- Always immediately remove from service any component or coupling from which leakage is detected.
- Carefully select the appropriate component or coupling for your intended use.
- Our standard unions are not dual certified for sour service/NACE applications. If you need a union for sour service/NACE applications, please let us know when you place your order.
- \* If other manufacturers' components are used interchangeably, CNC Flow Control does not assume liability.