



DUAL PLATE WAFER CHECK VALVE

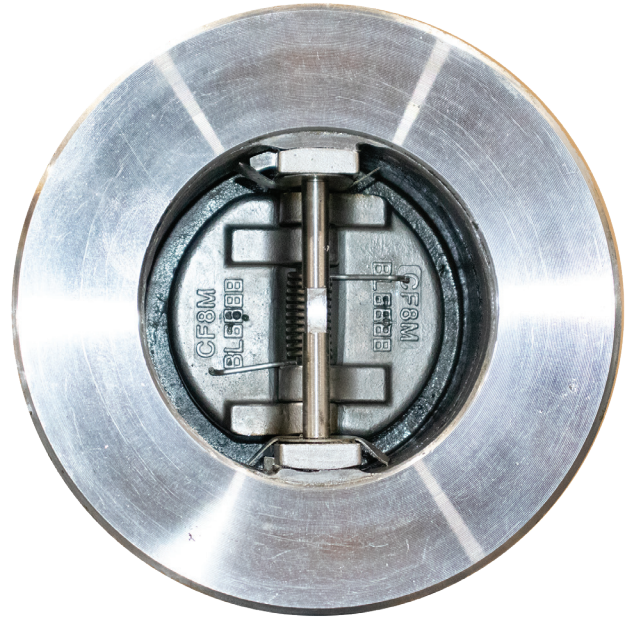
DCW Series

DUAL PLATE WAFER CHECK VALVE



STANDARDS

- API 594 Design
- CSA Z245.15-22 Design
- API 598 Testing & Inspection
- ASME B16.34, Pressure-Temperature
- NACE MR0175/ISO 15156, MR0103
- API 6FD Fire Safe Design
- API B16.5 Ends Flanged
- Flat-Faced with 125-250 AARH Finish
- API 594 Face-to-Face Dimensions



SPECIFICATIONS

- ASME CL 150, 300, 600, Sizes 2" – 8"
- ASME CL 900, 1500 Sizes 2" – 4"
- Available in Carbon Steel, Low Temp Carbon Steel, and Stainless Steel
- Stainless steel trim standard (wetted parts)
- Retainerless Design
- Spring Assisted
- Full Port Design
- All Bodies are overlaid with Stellite 6 (seating surfaces)
- Metal to Metal Seal
- Our Retainerless design does not have any holes passing through the body of the valve. In applications where very hazardous or corrosive gases or liquids are passing through the valve, a Retainerless design may be preferable to minimize the chance that any leakage can escape through holes in the valve body.
- Suitable for horizontal or vertical (flow up) applications, for vertical installations, only install with the arrow mark on the body pointing in an upward direction.

HOW TO ORDER GUIDE



EXAMPLE:

A 8" CL150, LCC T12 NACE, METAL SEAL, FLAT FACED. is written as: 801DCWL5MF

A	B	C	D	E	F	G
8	01	DCW	L	5	M	F

A	Size
2	2"
3	3"
4	4"
6	6"
8	8"

B	Pressure Class
01	150
03	300
06	600
09	900
15	1500

C	Valve Type
DCW	Dual Plate Wafer Check Valve

D	Body Material
C	ASTM A216 WCB + Stellite 6 Faced
L	ASTM A352 LCC + Stellite 6 Faced
S	ASTM A351 CF8M + Stellite 6 Faced

E	Trim (Wetted Parts)
4	(API T8N) A217 CA15 Disc & Holders, A276 410 Hinge Pin & Stop Pin
5	(API T12N) A351 CF8M Discs & Holders, A276 316 Hinge Pin & Stop Pin

F	Seal
M	Metal

G	End Connection
F	Flat Faced- 125-250 AARH Finish



ENGINEERING DATA

Dimensions, Weights, Cv



CLASS 150 - DIMENSIONS (IN)							
Size	ØD	ØD2	ØD3	L	Weight (LB)	Cv	Cracking Pressure (PSI)
2"	4.06	1.89	2.68	2.38	7	67	0.2
3"	5.31	2.64	3.46	2.88	11	134	0.2
4"	6.81	3.62	4.57	2.88	18	319	0.2
6"	8.70	5.51	6.61	3.88	31	787	0.1
8"	10.94	7.20	8.43	5.00	57	1392	0.1

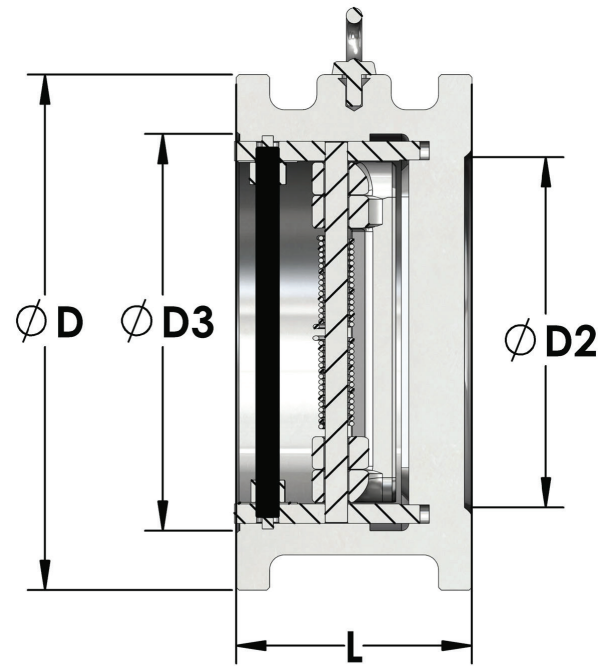
CLASS 300 - DIMENSIONS (IN)							
Size	ØD	ØD2	ØD3	L	Weight (LB)	Cv	Cracking Pressure (PSI)
2"	4.33	1.89	2.68	2.38	7	67	0.2
3"	5.83	2.64	3.46	2.88	13	134	0.2
4"	7.09	3.62	4.57	2.88	18	319	0.2
6"	9.80	5.51	6.61	3.88	40	787	0.1
8"	12.05	7.20	8.43	5.00	68	1392	0.1

CLASS 600 - DIMENSIONS (IN)							
Size	ØD	ØD2	ØD3	L	Weight (LB)	Cv	Cracking Pressure (PSI)
2"	4.33	1.89	2.68	2.38	7	67	0.2
3"	5.83	2.64	3.46	2.88	13	134	0.2
4"	7.56	3.62	4.57	3.12	24	319	0.2
6"	10.39	5.51	6.61	5.38	68	787	0.1
8"	12.56	7.09	8.43	6.50	117	1392	0.1

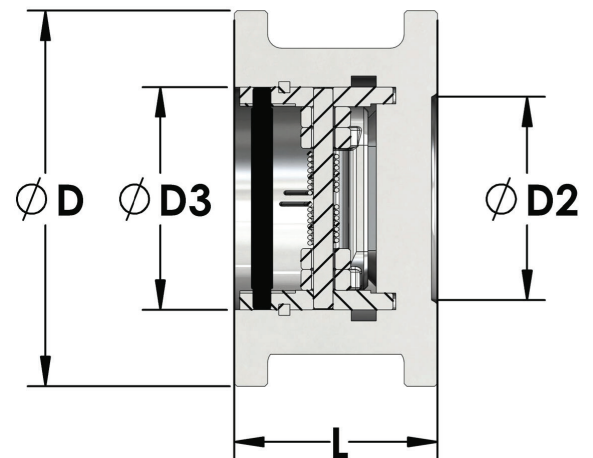
CLASS 900 - DIMENSIONS (IN)							
Size	ØD	ØD2	ØD3	L	Weight (LB)	Cv	Cracking Pressure (PSI)
2"	5.59	1.89	2.83	2.75	7	67	0.2
3"	6.61	2.44	3.46	3.25	22	115	0.2
4"	8.11	3.54	4.57	4.00	44	306	0.2

CLASS 1500 - DIMENSIONS (IN)							
Size	ØD	ØD2	ØD3	L	Weight (LB)	Cv	Cracking Pressure (PSI)
2"	5.59	1.89	2.83	2.75	7	67	0.2
3"	6.69	2.44	3.46	3.25	26	115	0.2
4"	8.27	3.54	4.57	4.00	49	306	0.2

MATERIAL TEMPERATURE LIMITS						
MATERIAL	SPECIFICATION	FAHRENHEIT (°F)		CELSIUS (°C)		
		MIN.	MAX.	MIN.	MAX.	
BODY	Carbon Steel	ASTM A216 WCB	-20	800	-29	427
	Low Temp Carbon Steel	ASTM A352 LCC	-50	650	-46	343
	Stainless Steel	ASTM A351 CF8M	-425	1500	-254	816

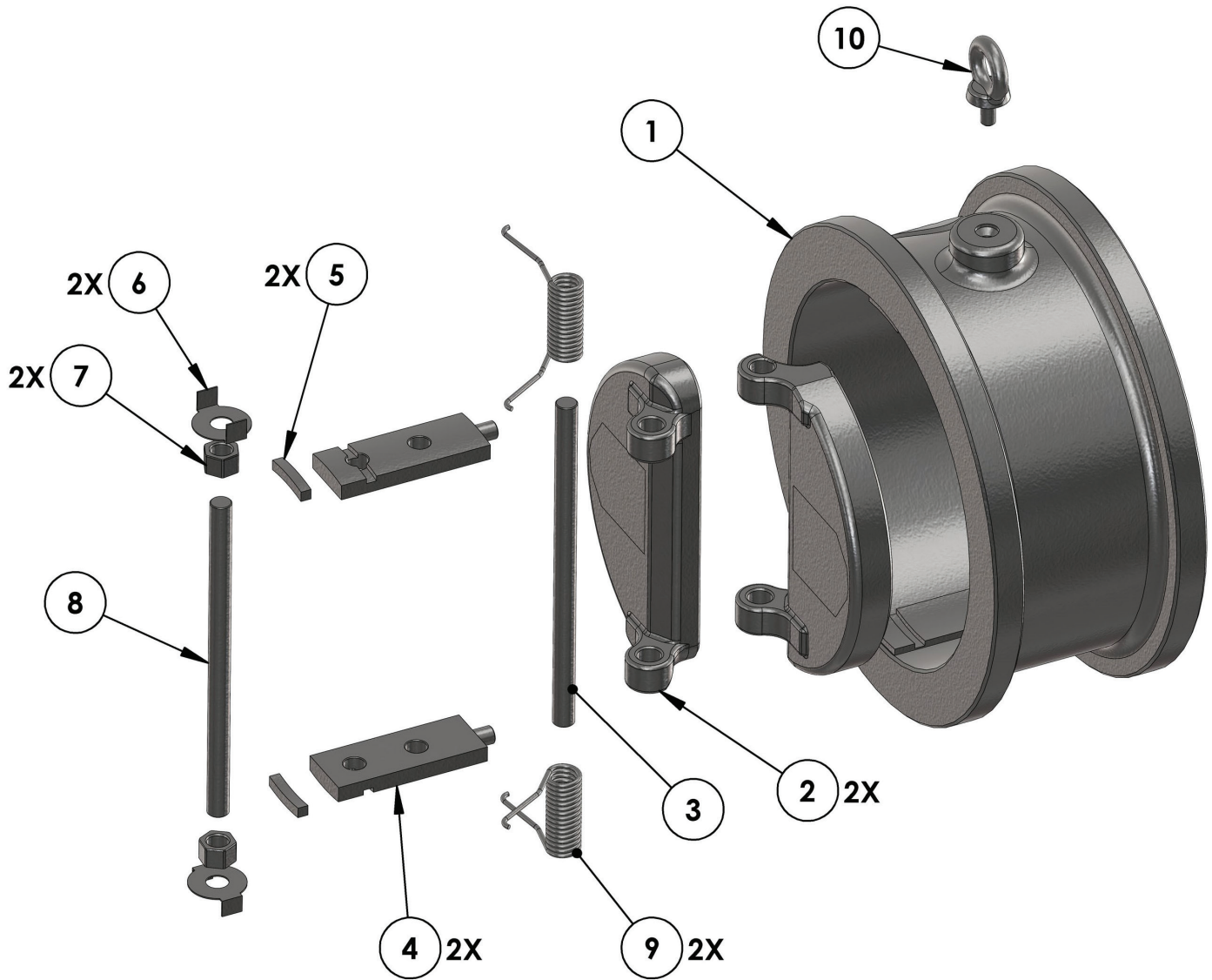


Size 8"



Size 3"

MATERIAL OF CONSTRUCTION



Materials of Construction				
Item #	Part Name	Carbon Steel	Low Temperature Carbon Steel	Stainless Steel
1	Body	ASTM A216 WCB+STELLITE 6 FACED	ASTM A352 LCC+STELLITE 6 FACED	ASTM A351 CF8M+STELLITE 6 FACED
2	Disc	A217 CA15	ASTM A351 CF8M	ASTM A351 CF8M
3	Hinge Pin	ASTM A276 410	ASTM A276 316	ASTM A276 316
4	Holder	A217 CA15	ASTM A276 316	ASTM A276 316
5	Key	ASTM A276 316	ASTM A276 316	ASTM A276 316
6	Clip	316SS	316SS	316SS
7	Nut	ASTM A194 8M	ASTM A194 8M	ASTM A194 8M
8	Stop Pin	ASTM A276 410	ASTM A276 316	ASTM A276 316
9	Spring	INCONEL X-750	INCONEL X-750	INCONEL X-750
10	Eye Bolt*	AISI 1020	AISI 1020	316SS

* Eye Bolt offered in CL150 & CL300 8" & larger, CL600, CL900, CL1500 6" & larger

About Our Company



CNC Flow Control is headquartered in Houston, Texas with multiple other locations in the U.S. and Canada. Our company unifies several trusted valve and flow line brands that have been serving numerous industries in North America for nearly three decades. From long range projects to same-day delivery, our diverse team is dedicated to understanding customers' needs in order to ensure exceptional service and the best solutions. Our extensive product portfolio ranges from commodity products like hammer unions and needle valves, to highly engineered products like API 6D trunnion mounted ball valves.



Quality assurance is critical to CNC Flow Control's process and we hold multiple internationally recognized quality standards certifications and management system. We are dedicated to understanding our customers' needs to ensure exceptional service by offering an in-house engineering and product management team, an extremely large product portfolio and extensive inventory to support same day shipments.

Headquarters - U.S.
10350 Clay Road, Suite 250
Houston, TX 77041
Toll-Free: 844.398.6449

Headquarters - Canada
2930 51 Avenue NW, Unit # 3
Edmonton, AB T6P 0E1
Phone: 780.462.9166

Multiple other branch locations throughout the U.S. and Canada.

Website: www.cncflowcontrol.com



Follow us:



The contents of this publication are presented for informational purposes only, and while every effort has been made to ensure their accuracy, they are not to be construed as warranties or guarantees, expressed or implied, regarding the products or services described herein or their use or applicability.

© 2023 CNC Flow Control