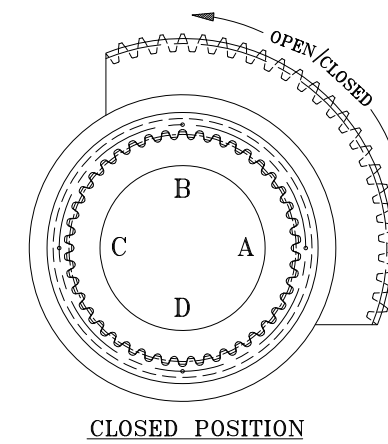
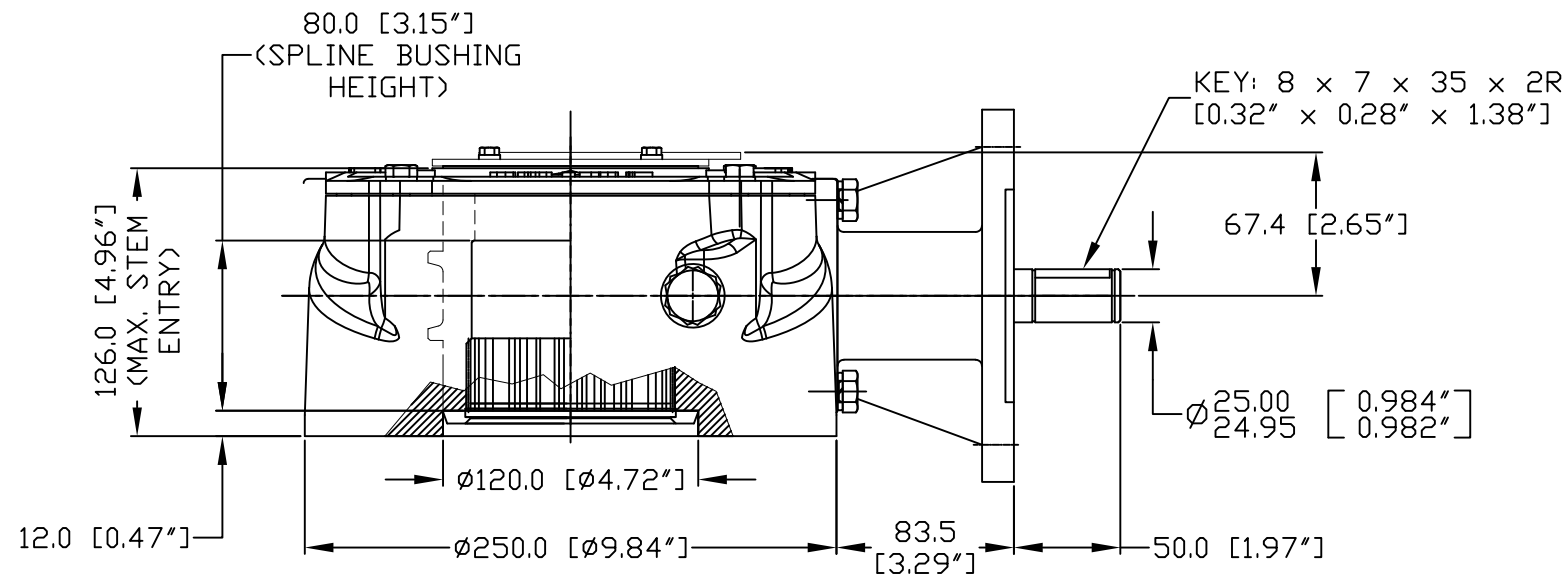
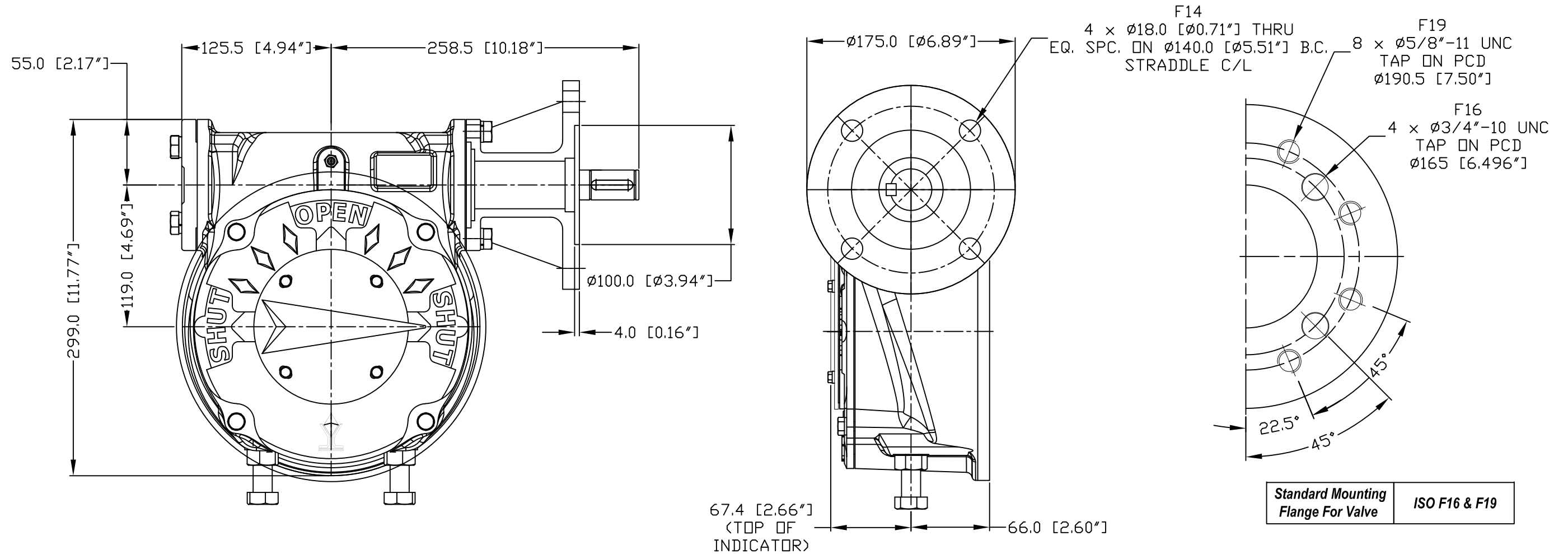


DIAMOND GEAR

50WG48-MFA



H.W. DIA.	RIM PULL AT MAX. I/P TORQUE (Lbs.)
22"	272

UNITS: MM [Inches]

MAX. OUTPUT TORQUE [IN.LB]	MAX. INPUT TORQUE [IN.LB]	RATIO	MECHANICAL ADVANTAGE	OUTPUT ANGULAR STROKE	TURN PER 90°	WEIGHT [LB]	MAX. ROUND BORE [IN.]	MAX. SQUARE BORE [IN.]	STANDARD MOUNTING STRADDLE C/L
50,184	2,987	48:1	16.8	$\pm 20^\circ$	12	71	$\varnothing 2.875$ Key: 3/4x1/2	2.375	F16 & F19

C921252A

REV.0

2/20/19



CNC FLOW CONTROL
HOUSTON, TEXAS, USA



PHONE: 713-466-1644, FAX: 713-466-1715