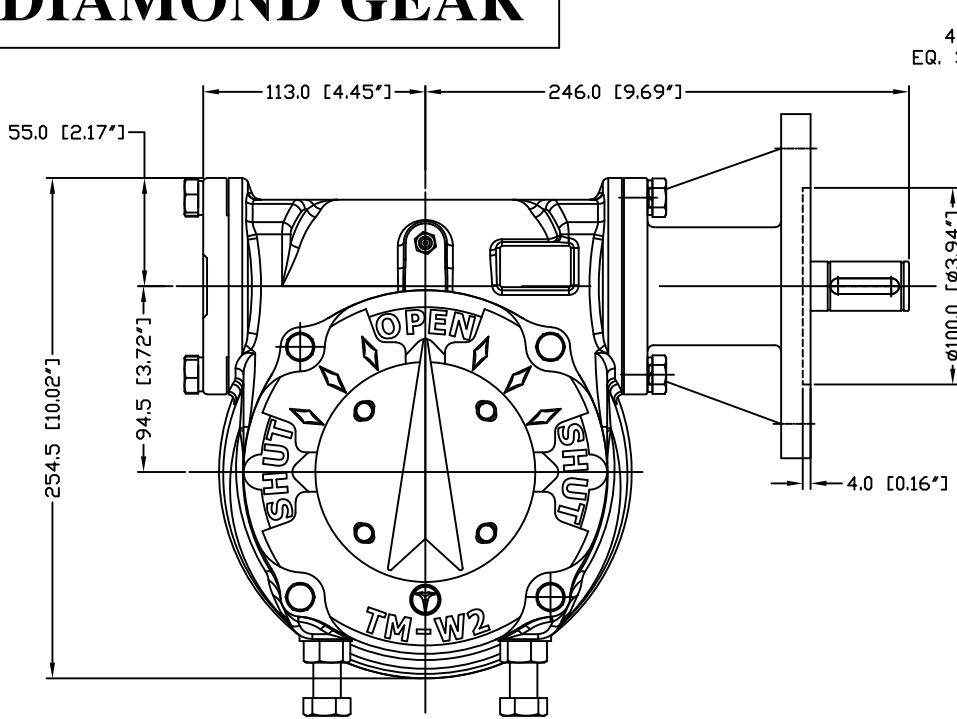
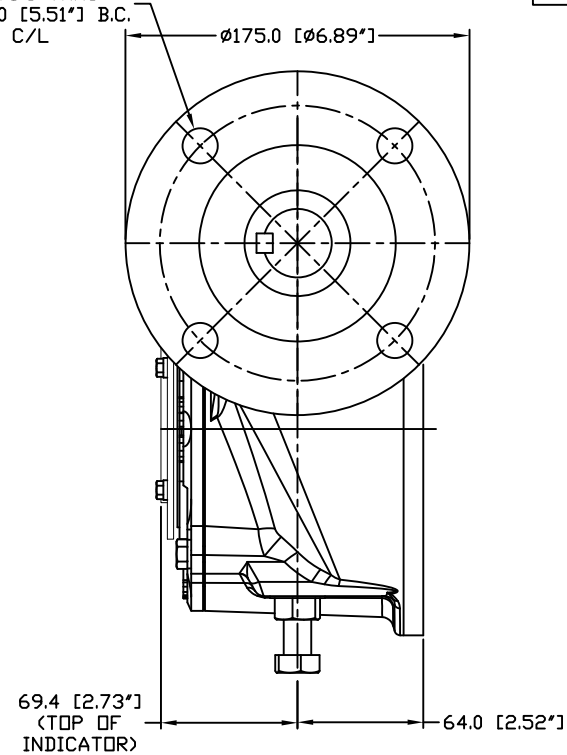


# DIAMOND GEAR

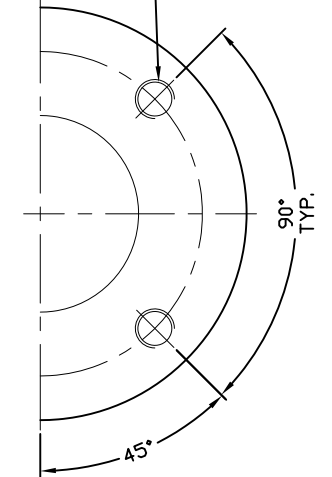
# 28WG42-MFA



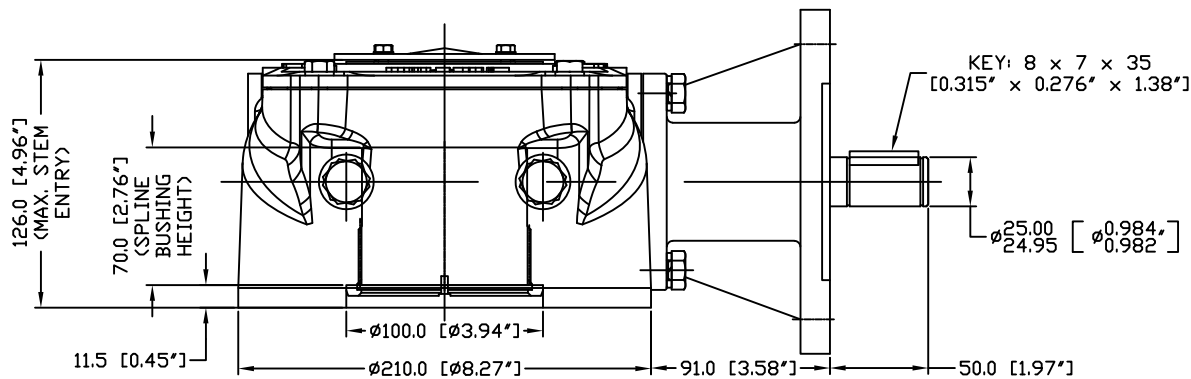
F14  
4 × Ø18.0 [Ø0.71"] THRU  
EQ. SPC ON Ø140.0 [5.51"] B.C.  
STRADDLE C/L



F16  
4 × Ø3/4"-10 UNC  
TAP ON PCD  
Ø165.0 [Ø6.50"]

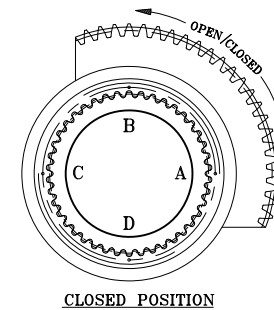


Standard Mounting Flange For Valve	ISO F16
------------------------------------	---------



KEY: 8 × 7 × 35  
[0.315" × 0.276" × 1.38"]

Ø25.00 [Ø0.984"]  
Ø24.95 [Ø0.982"]



H.W. DIA.	RIM PULL AT MAX. 1/P TORQUE (Lbs.)
19.7	194

REV.0

C921249A

1/31/2018

UNITS: MM [Inches]

MAX. OUTPUT TORQUE [IN.LB]	MAX. INPUT TORQUE [IN.LB]	RATIO	MECHANICAL ADVANTAGE	OUTPUT ANGULAR STROKE	TURN PER 90°	WEIGHT [LB]	MAX. ROUND BORE [IN.]	MAX. SQUARE BORE [IN.]	STANDARD MOUNTING STRADDLE C/L
28,062	1,909	42:1	14.7	±20°	10.5	55	Ø2.5" Key: 5/8" × 7/16"	2.0	F16

## CNC FLOW CONTROL

HOUSTON, TEXAS, USA

PHONE: 713-466-1644, FAX: 713-466-1715